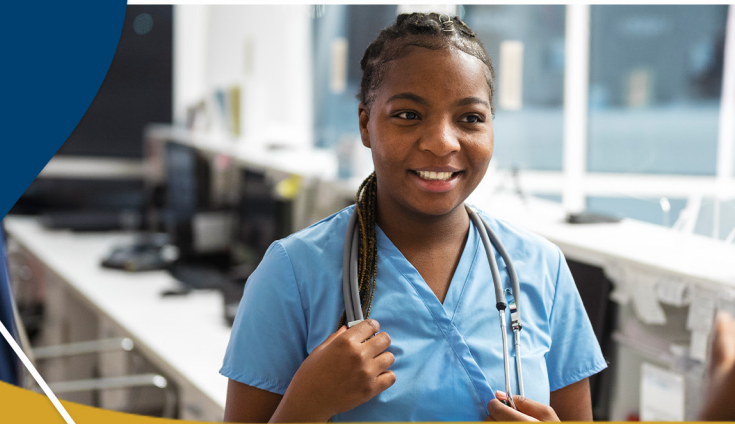




SPC St. Petersburg
College

2024 SPC WORKFORCE COURSE CATALOG





On behalf of the dedicated St. Petersburg College (SPC) faculty and staff, we would like to take this opportunity to thank you for engaging with us to enhance the training and workforce solutions in your organization.

SPC was founded in 1927 as St. Petersburg Junior College, Florida's first two-year college. Access, excellence, and student support are the hallmarks of St. Petersburg College. SPC alumni rank first in Florida for earning the highest entry wages among state community college graduates.

Regionally accredited and nationally recognized, SPC was the first state college in Florida to offer bachelor's degrees. SPC offers more than 110 degree and workforce certificate programs of study, and many high-demand, high-skill industry-recognized short-term training programs. We offer a career-focused curriculum created in conjunction with industry experts to ensure our students meet the needs of today's employers.

At SPC, we pride ourselves on offering responsive, competent, and excellent training options. Our students and clients are the most important part of our business, and we work tirelessly to ensure your complete satisfaction from start to finish. We know that you will find our staff to be supportive, knowledgeable, and focused on the future to help you reach your desired outcomes.

SPC provides our business partners' employees the knowledge and skills necessary to increase their potential and to actualize their desired careers. We are confident that your company will achieve its goals through our customized programs that are focused on appealing to your employees' individual styles of learning.

Thank you once again for entrusting SPC with your training needs. We are honored to work with you to develop a strong and equipped workforce.

Belinthia Berry, Dean
Workforce, Community & Corporate Partnership
St. Petersburg College

spcollege.edu • Mailing Address: PO Box 13489, St. Petersburg, FL 33733-3489

St. Petersburg College is committed to equal access/equal opportunity in its programs, activities, and employment. For additional information visit www.spcollege.edu/eaeo/.

TABLE OF CONTENTS

GROUP TRAINING & FACILITY



Group Training For Businesses

Looking for training and education that is customized specifically for your business? Need a customized training strategy developed just for your employees? Let the St. Petersburg College do it!

We can manage all your training and development for as many employees as you would like. Choose from a broad base of programs or let us develop a customized curriculum to meet your business needs.

We have multiple training options available:

- Customized eLearning
- 24/7 online learning
- Small to large work groups
- SPC live or virtual classroom
- SPC hybrid learning
- Private group training
- Private training for teams on line and in-person

Contact us today for your consultation with a representative at by emailing workforce@spcollege.edu or call 727-341-4445.

Visit us at spc.edu/workforce for more information.



Contents

Funding Sources.....	4
Program Scholarships.....	6
Allied Health.....	7
Business.....	10
International Language.....	13
Manufacturing.....	16
Technology & Drones.....	20



Facility Rentals

Host your next team meeting, computer training, conference/ seminar or training session at our convenient location in Clearwater at the SPC EpiCenter.

SPC Facility Meeting Services available:

- AV media
- Presentation and projection capabilities
- Parking
- On-site/off-site catering menu options
- Wireless internet access

SPC Customer Service Support available:

- Professional meeting and IT support
- Special Event Liability Insurance
- Workshop facilitation

Convenient Location:

- Easy access to major highways, nearby hotels and dining

* Catering: Special Events Liability Insurance fee & sales tax will be included in pricing.

For more information about facility rentals contact a representative by emailing workforce@spcollege.edu or call 727-341-4445.

Visit us at spc.edu/workforce for more information.

FUNDING SOURCES

Workforce Education provides short-term certification training, many of which are included on the local Targeted Occupation List. Depending on your situation, you may be eligible for funding. Contact the funders below to determine the eligibility requirements. Please note our courses are typically not eligible for Financial Aid/Pell Grant. In addition, Payment Plans may be available for eligible programs.

If you need further assistance in navigating the available funding opportunities or want to learn more about our programs, please contact us at workforce@spcollege.edu or **727-341-4445**.



Open Door Scholarship

The Open-Door Scholarship Program 2023-2024, funded by the Florida Department of Education, is designed to support students completing short-term and technical education credentialing courses. The program aims for participants to attain a workforce certificate in high-demand fields successfully.

Through the grant, you can complete short-term training for high-demand jobs in as little as six weeks. This opportunity covers the cost of tuition for a select group of programs that lead to industry certifications. You must be a Florida Resident and provide documentation matching the address you provide, to register in the program.

View the Open-Door scholarship programs and apply here: <https://web.spcollege.edu/survey/35819>

Submit your Proof of Address here: <https://web.spcollege.edu/survey/35926>

CareerSource Pinellas

CareerSource Pinellas is here to help you chart a course for success. Receive personalized career consultation, academic advancement, job opportunities, and more with our team of career counselors, dedicated to helping every job-seeker find a career that meets their individual needs and talents.

Through a strong network of industry and educational partnerships, CareerSource Pinellas offers a wealth of resources for career seekers, including internships, training and certification courses, registered apprenticeships, and job placement services.

Interested in applying? Please follow the steps below:

- Visit www.careersourcepinellas.com and complete the online application for the WIOA program. Please be sure to monitor your email for information regarding next steps.
- Complete a full registration in Employ Florida at www.employflorida.com

At the end of the application process, you will receive additional instructions from a CareerSource Counselor.

FUNDING SOURCES



St. Pete Works Funding

Pinellas County residents residing in the Community Redevelopment Area (CRA) will receive full tuition, books, and materials for the short-term training of their choice in the following areas: Specialized Manufacturing, Financial Services, Data Analytics, Marine & Life Sciences, and Creative Arts & Design. This opportunity will be instrumental in helping CRA residents start a career pathway of success and stability. For additional information, please contact **727-302-6746** or info.stpeteworks@spcollege.edu.



Dream Big. Make It Happen Scholarship

Strategic Insurance Services Insurance Company provided the Dream Big Make It Happen Scholarship to pay the full tuition for students who want to enroll in SPC's 4-40 Insurance Customer Representatives Online Certificate Course. This self-paced online state-approved 40-hour designation course exempts from the state exam upon successful completion. It allows an individual to be an employee of General Lines property and casualty company.

Scholarship Requirements:

- The applicant's goal is to become employed as an Insurance Customer Representative
- Must have two years of customer service experience
- Able to pass a background check to pursue employment; this is not a course entrance requirement
- Proficient in Microsoft Outlook, Microsoft Office, and Windows/Computer skills.



Scholarship Link: <https://web.spcollege.edu/survey/33874>

Entrepreneurship Scholarship

The Entrepreneurship Scholarship pays the tuition for the Entrepreneurship class. In the class learn how to start a business, market research, refine your business plan, fund a startup, and promote your business. In addition, individuals will receive instruction to prepare for the Entrepreneurship and Small Business (ESB) Certification exam.

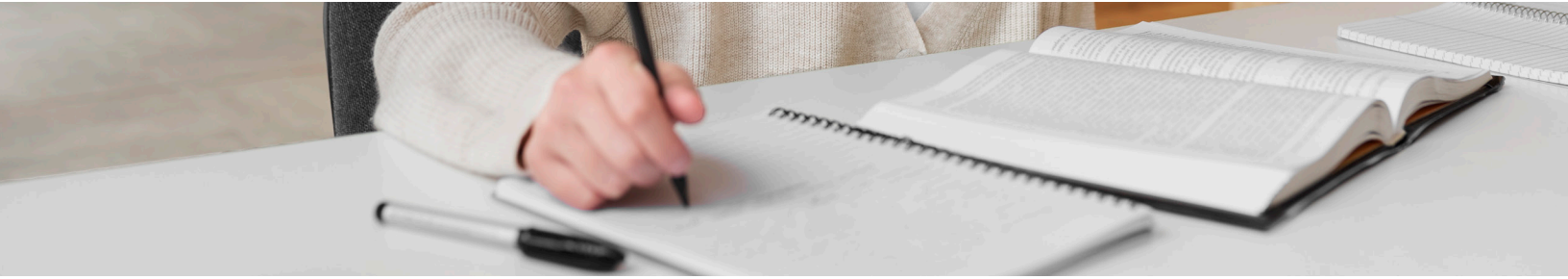
Scholarship Link: <https://web.spcollege.edu/survey/36032>



Florida Division of Vocational Rehabilitation

Vocational Rehabilitation is a federal-state program that helps people who have physical or mental disabilities get or keep a job. VR is committed to helping people with disabilities find meaningful careers. <https://www.rehabworks.org/>

PROGRAM SCHOLARSHIPS



The program listed below includes the scholarship and job wages averages. Wages may vary based on your work experience and level of technical education.

Business Program Scholarships

Entrepreneurship Scholarship:

<https://web.spcollege.edu/survey/36032>

Pay Rate: Pay varies according to the type of business.

4-40 Insurance Customer Representative Scholarship:

<https://web.spcollege.edu/survey/33874>

Pay Rate: \$19.00-\$21.63

Open-Door Program Scholarship Application Link: <https://web.spcollege.edu/survey/35819/>

The programs below qualify for the Open-Door Scholarship.

Manufacturing

Electrical Lineworker

Pay Rate: \$20.21-\$31.25

Mechatronics

Pay Rate: \$18.92-\$27.94

Metal Forming

Pay Rate: \$17.00-\$20.00

Supply Chain Management Principles

Pay Rate: \$19.80-\$31.94

Solar Technology

Pay Rate: \$17.08-\$20.90



Health

Certified Clinical Medical Assistant

Pay Rate: \$16.00-\$17.35

Certified Patient Care Technician

Pay Rate: \$16.00-\$17.00

RN Refresher

Pay Rate: \$25.69-\$34.28

RN Remediation

Pay Rate: \$25.69-\$34.28



Technology

AWS Certified Cloud Practitioner

Pay Rate: \$19.27-\$38.03

AWS Certified Developer – Associate

Pay Rate: \$19.27-\$38.03

AWS Certified Solutions Architect – Associate

Pay Rate: \$19.27-\$38.03

AWS Certified SysOps Administrator- Associate

Pay Rate: \$25.53-\$40.14

CompTIA A+

Pay Rate: \$26.04-\$40.38

Soldering

Pay Rate: \$18.00-\$25.00

CompTIA Network +

Pay Rate: \$26.04-\$40.38

CompTIA Security +

Pay Rate: \$25.53-\$40.14

CompTIA Advanced Security Practitioner

Pay Rate: \$25.53-\$40.14

CompTIA Cybersecurity Analyst (CySA+)

Pay Rate: \$26.69-\$44.45

Digital Media Marketing

Pay Rate: \$17.00-\$29.20

Drones Safety /Droning Flight Training

Pay Rate: \$22.23-\$29.18



ALLIED HEALTH



CERTIFIED CLINICAL MEDICAL ASSISTANT

Fees: \$3,995

Modality: Hybrid

Program Length: 16 weeks

Prerequisite: High School Diploma/GED or College Transcripts. Successfully pass background/drug screening and must be 18 years of age

*Company Group Training Available Through Corporate College

This course prepares you to become a Certified Clinical Medical Assistant (CCMA) through the National Healthcare Association (NHA). The program includes an optional 80-hour (unpaid) externship. Graduates perform both clinical and administrative duties under the direction of physicians, nurse practitioners, and physician assistants. CCMA's typically work in medical offices, clinics, and urgent care centers and may work in general medicine or specialty practices.

CERTIFIED PATIENT CARE TECHNICIAN

Fees: \$3,995

Modality: Hybrid

Program Length: 12 weeks

Prerequisite: High School Diploma/ GED or College Transcripts. Successfully pass background/drug screening and must be 18 years of age

The Patient Care Technician provides hands-on assistance to serve patient's needs, as well as work alongside doctors, nurses, and other healthcare providers. Patient Care Technicians may perform basic patient care — bathing, feeding, catheter care, obtaining EKG readings, and monitoring vital signs. Upon completion of the course, students will be eligible to take the PCT exams through the National Healthcare Association (NHA).

CERTIFIED PHLEBOTOMY TECHNICIAN

Fees: \$1,695

Modality: Hybrid

Program Length: 10 weeks

Prerequisite: High School Diploma/ GED or College Transcripts. Successfully pass background/drug screening and must be 18 years of age

The phlebotomist is a vital member of the clinical laboratory team, whose main function is to obtain the patient's blood specimens venipuncture, and micro collection for testing purposes. Phlebotomists are employed throughout the healthcare system including in hospitals, neighborhood health centers, medical group practices, HMOs, public health facilities, veteran hospitals, insurance carriers, and other healthcare settings. Earning a Phlebotomy Technician Certification from NHA can give employers confidence in your skills and abilities.



LOCAL ANESTHESIA FOR THE DENTAL HYGIENIST

Fees: \$1,695.00

Modality: Hybrid

Program Length: 10 weeks (8 weeks online & 2 weekends face-to-face)

Prerequisite: Active FL Dental Hygienist License

This course provides the registered dental hygienist with the required hours in both the didactic instruction and the clinical experience for FL certification. You will learn the neurophysiology, armamentarium, techniques of local anesthesia administration, local and systemic complications, and the pharmacology of local anesthetic agents. This course will provide instruction to safely and effectively select and administer local anesthetic agents. This course is specifically designed to obtain your Florida certification.

DENTAL HYGIENE REFRESHER PROGRAM

Fees: \$3,195

Modality: Hybrid

Contact Hours: 40 hours

Contact: Joyce Turcotte, RDH, M. Ed at jturcotte@pls.org for more information.

Who can attend:

1. Graduate of an accredited dental hygiene school in the USA
2. Eligible candidate who graduated from a dental school outside the USA
3. State Board authorization for license reinstatement in good standing
4. Currently licensed dental hygienist needing a refresher or remediation/ CEUs.

General topics include but are not limited to:

Infection control, CDC guidelines, OSHA, HIPAA, legal issues, oral assessment and disease detection, digital X-rays, data collection, periodontal health assessment, AAP current staging, Manual and ultrasonic instrumentation, care, and maintenance.

MENTAL HEALTH TECH

Fees: \$3,799

Modality: Online

Program Length: 366 Hours

In partnership with CareerStep, this program prepares learners for a career as a Mental Health Technician. This program prepares learners to take the Mental Health Technician Certification exam through the American Medical Certification Association (AMCA) and the Certified Electronic Health Records Specialist (CEHRS) exam. Please note that individual state requirements may vary. Learners are responsible for checking with their state's governing body for state-specific requirements. Some of the responsibilities are: Leading patients in therapeutic and recreational activities, observing behavior, listening to patient concerns, and assisting with daily activities like eating and bathing. You will receive one exam voucher. Visit www.careerstep.com/lp/partner/ap/spc/ for more information and to enroll.

ALLIED HEALTH



HEALTHCARE IT PROFESSIONAL

Fees: \$4,299

Modality: Online

Program Length: 323 Hours

Prerequisite: High School Diploma/GED and must be 18 years of age

In partnership with Career Step, this program prepares students for a career as a Healthcare IT professional to support the use of technology in the healthcare setting. Specific responsibilities include: installing and maintaining electronic health record systems, working as part of an internal IT team, or providing technical support to employees throughout a healthcare facility. Prepares students to earn the Comp TIA A+, Certified Medical Administrative Assistant (CMAA), and Certified Electronic Health Records Specialist (CEHRS) Certifications. *Exam fees are included in the price*

NUTRITIONAL COACH

Fees: \$3,799

Modality: Online

Program Length: 331 Hours

In partnership with CareerStep, this program prepares learners for a career as a Nutritional Coach. Nutritional Coaches are an inspiration for those who need help tweaking their diet and/or developing an exercise routine to meet their individual goals. They lead, instruct, and motivate. Here's a breakdown of their responsibilities: Teaching proper fitness and nutrition habits, observing clients' exercise routines and tracking their progress, and developing fitness/meal plans based on client's needs and goals. Certification is what sets true professionals apart from the rest of the pack. Complete our training and we'll give you one free voucher for the certified Nutrition Specialist exam from the American Academy of Sports Dietitians and Nutritionists (AASDN). Visit www.careerstep.com/lp/partner/ap/spc/ for more info and to enroll.

PHARMACY TECHNICIAN

Fees: \$4,199

Modality: Online

Program Length: 292 Hours (+130 Clinical Hours)

Prerequisite: High School Diploma/GED and 18 years of age

In partnership with Career Step, this program is comprised of online and experiential training, providing 24/7 access to all material and allowing students to progress through the training at their schedule and their own pace. The program is broken into online modules, or course subjects, all of which focus on helping students build the essential knowledge and skills of a pharmacy technician. The final exam of the course is designed to provide an experience similar to that of the Pharmacy Technician Certification Board (PTCB) Exam, ensuring that you are as prepared as possible to sit for national certification immediately upon completion.

BUSINESS PROGRAMS



DIGITAL MEDIA MARKETING

Fees: \$1,800

Location: TBA

Program Length: TBA

The certificate program in digital media marketing will prepare students to manage marketing campaigns effectively and efficiently through digital media outlets. The course is designed to serve small businesses as well as marketing professionals. Topics covered in this course will be an introduction to digital media marketing; understanding the difference between paid media, earned media, and owned media; introduction to content marketing; pay-per-click advertising; Google AdWords, and Search Engine Marketing.

ENTREPRENEURSHIP ESSENTIALS AND ESB CERTIFICATION EXAM PREP COURSE

Fees: \$1,000

Location: SPC Downtown Campus

Program Length: TBA

NFTE has partnered with St. Petersburg College to offer the Career Relaunch program to individuals interested in learning the essentials of entrepreneurship. This course is designed to teach individuals the essentials of entrepreneurship. Learn about doing market research, refining your business plan, funding a startup, and promoting your business. In addition, individuals will receive instructions to prepare for the Entrepreneurship and Small Business (ESB) Certification exam.

INSURANCE 4-40 CUSTOMER REPRESENTATIVE 100% ONLINE NO STATE EXAM

Fees: \$299

Modality: Online

Program Length: 14 weeks

The course is designed for students who are interested in becoming a Customer Representative (4-40). This is a state-approved 40-hour designation course that upon successful completion exempts from the state exam. It allows an individual to be a salaried employee of the General Lines (property and casualty) Agent or agency that may transact automobile, watercraft, home, motorcycle, and pet insurance under the supervision of a licensed and appointed General Lines agent.

PATHWAY TO COMMERCIAL REAL ESTATE

Fees: \$149

Location: SPC Downtown Campus

Program Length: 8 weeks

This course examines various pathways to commercial real estate and its development. It is designed for students interested in new or existing commercial real estate ventures. Further, those who require more subject matter knowledge on commercial buildings, their procurement, purchase, and management. In addition, knowledge of state and local regulations that govern those processes. The student will learn and engage with leaders and prominent experts in the field, to gain real-world experience, mentorship, and apprenticeship opportunities.

BUSINESS PROGRAMS



Supply Chain Management

The CSCMP SCPro™ Fundamentals offered by St. Petersburg College's Workforce Education is a comprehensive online program designed to train individuals on all processes related to the supply chain. This training is ideal for entry-level and new industry professionals who need to build skills and/or mid-level professionals with specialized industry experience who want to broaden their knowledge across the spectrum of supply chain processes. Also, a beneficial program for candidates preparing for CSCMP's SCPro™ Fundamentals Certification.

There are 8 certifications; however, students can choose to take one course or all classes in any order.

SUPPLY CHAIN MANAGEMENT PRINCIPLES ONLINE

Fees: \$350

Modality: Self-Paced/Online

Program Length: 14 Weeks

The Supply Chain Management Principles certification track is a great place to start and is a 'launch pad' to begin your supply chain educational and certification process. It provides a high-level overview of each of the functions in a supply chain and is an introduction to the remaining seven certifications.

SUPPLY CHAIN: CUSTOMER SERVICE OPERATIONS ONLINE

Fees: \$350

Modality: Online

Program Length: 14 Weeks

Customer Service Operations focuses on product delivery. Upon completion of this track, participants will be capable of describing the management of customer relationships including the importance of communication, perceptions, understanding the product & service, and knowing quality as it pertains to customer service.

SUPPLY CHAIN: DEMAND PLANNING ONLINE

Fees: \$350

Modality: Self-Paced/Online

Program Length: 14 Weeks

The Demand Planning certification track presents the details necessary to create and utilize a forecast to build an actual demand plan. Forecasting is a process that predicts customer demands. The demand planning process uses the forecast to develop a plan that ensures inventory levels are appropriate to meet the predicted demands.

SUPPLY CHAIN: INVENTORY MANAGEMENT ONLINE

Fees: \$350

Modality: Self-Paced/Online

Program Length: 14 Weeks

This track also covers the importance and use of inventory in the supply chain; exposure to different types of inventories; techniques for effectively managing and controlling inventory levels; the relationship between forecasting and inventory management; and the financial impacts of inventory investments.

BUSINESS PROGRAMS



SUPPLY CHAIN: MANUFACTURING & SERVICE OPERATIONS ONLINE

Fees: \$350

Modality: Self-Paced/Online

Program Length: 14 Weeks

This certification track includes the role of manufacturing and service operations; linking market requirements with the selection of manufacturing processes; facility location strategies; facility layouts; the importance of production planning and control in synchronizing operations; the importance of quality management and performance measurement; and the impact of emerging technologies in operations.

SUPPLY CHAIN: TRANSPORTATION OPERATIONS ONLINE

Fees: \$350

Modality: Self-Paced/Online

Program Length: 14 Weeks

The Transportation Operations certification track provides the details for transporting goods. The Transportation Operations certification track provides the details for transporting goods.

SUPPLY CHAIN: WAREHOUSING OPERATIONS ONLINE

Fees: \$350

Modality: Self-Paced/Online

Program Length: 14 Weeks

Provides the basics of warehousing operations, including distribution centers and fulfillment centers. Key elements include the role of the warehousing and distribution centers in the supply chain, receiving, movement, storage, picking, packing, and packaging.

SUPPLY MANAGEMENT & PROCUREMENT ONLINE

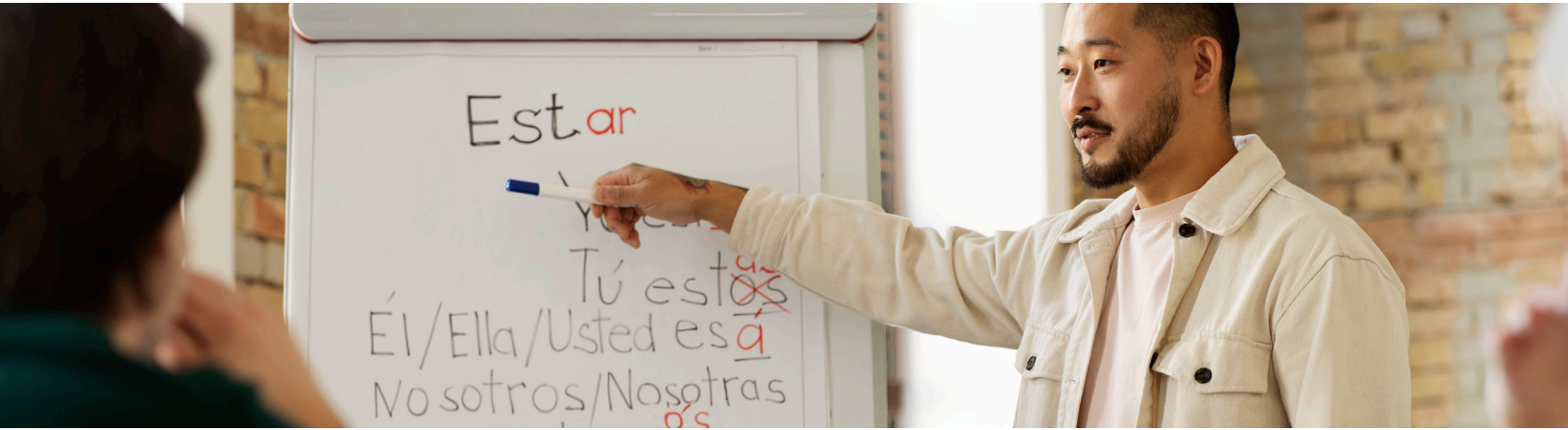
Fees: \$350

Modality: Self-Paced/Online

Program Length: 14 Weeks

The course emphasizes supplier identification, selection, and approval. Technology innovations along with numerous options for transportation modes enable procurement organizations to source items globally to achieve the best value solutions to fulfill their requirements.

INTERNATIONAL LANGUAGE INSTITUTE



INTENSIVE ENGLISH PROGRAM

Fees: \$1,395 (in-state) / \$4,458.64 (out-of-state)

Modality: Face-to-Face

Program Length: 308 Hours (14-week Term)

This program is designed for individuals who want to improve their English skills. The program presents students with basic, pre-intermediate, intermediate, upper-intermediate, and advanced levels of intensive instruction in reading, writing, grammar, and listening/speaking. The program specializes in developing these core communicative skills and prepares students for later academic and professional studies. Students will be immersed in the English language and have opportunities to participate in cultural trips and activities to enhance language learning and cultural understanding. The lessons accommodate beginner through advanced levels.

*Students who successfully finish the Advanced level and exit exams are guaranteed admission to St. Petersburg College!

INTENSIVE ENGLISH PROGRAM

Fees: \$697.50 (in-state) / \$2,229.32 (out-of-state)

Modality: Face-to-Face

Program Length: 154 Hours (7-week Term)

Prerequisite: Only new students or first-time transfers can begin midway through the term

This program is designed for individuals who want to improve their English skills. The program presents students with basic, pre-intermediate, intermediate, upper-intermediate, and advanced levels of intensive instruction in reading, writing, grammar, and listening/speaking. The program specializes in developing these core communicative skills and prepares students for later academic and professional studies. Students will be immersed in the English language and have opportunities to participate in cultural trips and activities to enhance language learning and cultural understanding. The lessons accommodate beginner through advanced levels.

*Students who successfully finish the Advanced level and exit exams are guaranteed admission to St. Petersburg College!

ENGLISH PRONUNCIATION I

Fees: \$160

Modality: Face-to-Face

Program Length: 6 Weeks

In this course, students will learn the pronunciation of single English sounds. Students will practice making the sounds and examples of those sounds in common English words and phrases. This course includes exercises to help create better English-speaking habits. The course starts with the basics of English pronunciation. Then students will practice more difficult sounds. This course is meant for beginning to intermediate speakers of English.

INTERNATIONAL LANGUAGE INSTITUTE



ENGLISH PRONUNCIATION II

Fees: \$160

Modality: Face-to-Face

Program Length: 6 Weeks

Prerequisite: Accent Reduction I or by teacher discretion

This class is designed for non-native speakers of English who want to improve the clarity of their speech and create the sounds of American English. Accent Reduction II will help students sound more like native speakers and be better understood in conversations. This course concentrates on English pronunciation aspects such as stress patterns, rhythm, linking words together, and intonation. This course is meant for intermediate to advanced speakers of English.

CONVERSATIONAL ENGLISH AS A SECOND LANGUAGE

Fees: \$160

Modality: Face-to-Face

Program Length: 6 Weeks

Prerequisite: Intermediate to Advanced Speakers of English

In this course, students will be exposed to informal conversational English, such as slang and idioms used by native speakers of English. Students will be given the chance to express themselves more fluently on various casual topics. Activities such as role plays, interviews, and interactive language-building exercises will be used. Students will develop fluency in practical, real-world English using various source materials, including blogs, songs, and videos, as well as textbooks and online material. This course is meant for intermediate to advanced speakers of English.

CONVERSATIONAL GERMAN I

Fees: \$160

Modality: Online

Program Length: 8 Weeks

This is an introductory course designed to develop basic conversational German skills. It is intended for students whose first language is not German and/or who have no previous German training and/or experience. This course is suitable for professionals seeking to build language skills for job advancement and community members interested in learning for travel or personal enrichment. The focus is on the development of the four communicative skills—listening, speaking, reading, and writing (in order of priority).

CONVERSATIONAL GERMAN II

Fees: \$160

Modality: Online

Program Length: 8 Weeks

Prerequisite: Conversational German I. Students should have a background in the German language.

This course is a continuation of German I. It is intended for those students who already have an acquaintance with the language. Emphasis is placed on a conversation in German. The course concentrates on vocabulary and sentence building to expand students' comprehension and speaking ability. This course is suitable for professionals seeking to build language skills for job advancement and community members interested in learning for travel or personal enrichment.



CONVERSATIONAL SPANISH I

Fees: \$160

Modality: Face-to-Face

Program Length: 8 Weeks

Prerequisite: Very basic Spanish vocabulary knowledge

This course is designed to immerse learners in practical situations, empowering them to express themselves with ease and confidence in everyday life. The primary goal is to offer the opportunity to use essential Spanish vocabulary in context and tailor it for survival in real-life scenarios where Spanish is the key to communication. This course is suitable for professionals seeking to build language skills for job advancement and community members interested in learning for travel or personal enrichment. Join us and take your elementary-level Spanish to the next level!

CONVERSATIONAL SPANISH II

Fees: \$160

Modality: Face-to-Face

Program Length: 8 Weeks

Prerequisite: Spanish I or at least one recent Spanish course

This immersive course will equip the learner with the essential Spanish lingo to thrive in situations where Spanish is necessary. The main goal is to offer many opportunities to use vocabulary for daily communication. This course aims to empower learners to express themselves in real-world scenarios. This course is suitable for professionals seeking to build language skills for job advancement and community members interested in learning for travel or personal enrichment. Elevate your language skills with Conversational Spanish II, building on the foundation laid in Conversational Spanish I.

CONVERSATIONAL SPANISH III

Fees: \$160

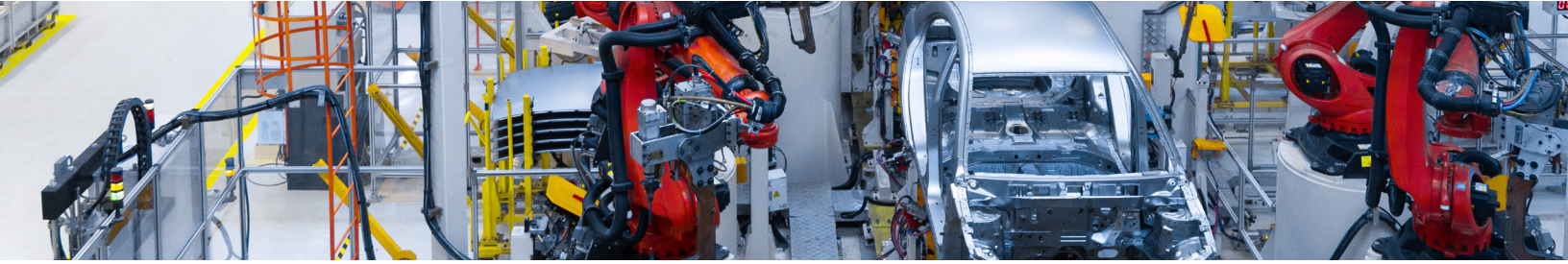
Modality: Face-to-Face

Program Length: 8 Weeks

Prerequisite: Spanish II or at least two recent Spanish courses

This course is an extension of Spanish II, designed to boost the learner's conversation and comprehension skills. Imagine navigating confidently as a tourist or excelling in business within Spanish-speaking countries. By the end of this course, you will effortlessly command a range of high-frequency vocabulary, idioms, phrases, expressions, and grammar for seamless Spanish interactions in practical situations. This course is suitable for professionals seeking to build language skills for job advancement and community members interested in learning for travel or personal enrichment.

MANUFACTURING PROGRAMS



ELECTRICAL LINeworkER PROGRAM (WITH CDL CERTIFICATION)

Fees: \$7,500

Modality: Hybrid (In-Class @ SPC Allstate Campus)

Program Length: 14 to 19 Weeks

St. Petersburg College's Electrical Lineworker training is designed to provide students with the fundamental knowledge and basic practical skills needed when seeking a career opportunity in the electric utility industry as a line worker trainee. Students will develop technological competency, analytical problem-solving skills, workplace ethics, teamwork, and job responsibility. Students will study basic electrical theory, elements of electric power systems operations, fundamental safe work practices, and various overhead and underground electrical construction operation and maintenance standards.

*Students will receive the following certifications because of this training: CDL Class A, OSHA10 Card, CPR, AED & First Aid, Bucket Truck Rescue, and Pole Top Rescue

Mechatronics

FLUID POWER AND ELECTROHYDRAULIC/PNEUMATICS

Fees: \$575

Modality: Hybrid

Program Length: 8 Weeks

Explains the fundamental concepts of fluid power and electro-fluid power systems. It covers fluid power principles, calculations of fluids' physical properties, and their ability to do work. Introduces the various fluid power components, symbols, and circuits. Introduces troubleshooting of fluid power components and systems with an emphasis on safety. Addresses fluids, filters, reservoirs, piping, pumps, actuators, accumulators, control valves, and combination circuits.

GENERAL PROJECT MANAGEMENT AND PREDICTIVE MAINTENANCE

Fees: \$499

Modality: Hybrid

Program Length: 8 Weeks

Introduces how routine work is done to keep equipment in good working order and to optimize its efficiency and accuracy. Addresses routine cleaning, lubricating, testing, checking for wear and tear, and eventually replacing components to avoid breakdown. Introduces students to the several types and styles of predictive and preventive maintenance components, principles, and practices used in industrial applications.

BLUEPRINT READING/SCHEMATICS

Fees: \$499

Modality: Hybrid

Contact Hours: 40

Introduces the fundamental information in drafting necessary to retrieve, read, manipulate, and understand a mechanical part print. Instruct students to recognize, identify, describe, and relate the components of schematics and their symbols and connectors to describe electrical, electronics, pneumatics, hydraulics, piping circuits, welding, and joining symbols interpretation.

MANUFACTURING PROGRAMS

ROBOTICS

Fees: \$499

Modality: Hybrid

Program Length: 8 Weeks

Introduces robotics regarding industrial robotic safety standards, applications, types of classes for industrial robots, essential system components, automated motion concepts, fundamental programming techniques, definitions, and the standard terms associated with computer-integrated manufacturing (CIM) as it relates to mechanical cells. Instructs students on the mastering concepts of preventive maintenance techniques required for a robot and their backup systems in addition to recovery procedures needed to interpret robot error codes and perform a safe recovery start-up procedure on robotics equipment, as well as integrating robotic applications in a PLC-controlled, automated system.

CONTROL & INSTRUMENTATION

Fees: \$499

Modality: Hybrid

Program Length: 8 Weeks

Covers the diversity of control devices, including the theory of operation, applications in automation control, and troubleshooting and repair. Introduces identification, installation, replacement, and troubleshooting of automation controller circuit boards and modules. This course also introduces standard input device installation, maintenance, and troubleshooting.

BASIC ELECTRICITY/ELECTRONICS

Fees: \$499

Modality: Hybrid

Program Length: 8 Weeks

Introduces the various elements of basic electricity, including identifying electrical symbols and interpreting schematics, cross referencing prints, tracing circuits, and interpreting sequential function charts, line drawings, and time charts. Introduce the student to electrical measurement instruments, including digital and analog multimeters, clamp-on ammeters, megohm-meters, and oscilloscopes. Concentrates on control logic components and circuit function. Introduces the student to solid-state devices and applications.

MECHANICAL SYSTEMS/MECHANICAL DRIVE SYSTEMS

Fees: \$499

Modality: Hybrid

Program Length: 8 Weeks

Introduces safety, maintenance techniques, and procedures for maintaining industrial equipment, including industrial couplings, chains, sprockets, belts, bearings, shafts, brakes, clutches, gears, and cams. Addresses the principles of power transmission calculations of speed and force and how they affect a power transmission system.

METAL FORMING

Fees: TBA

Modality: Face-to-Face

Program Length: 6 Weeks

Contact Hours: TBA

This course provides basic instruction on the layout and forming of flat sheets of metal into shapes and objects. Students will learn how to draft and work from shop drawings depicting 3-dimensional objects. They will learn layout skills using Parallel Line Development and some Geometry. Participants in the course will be instructed in the proper use of hand and power sheet metal tools as well as shop equipment. Students will also learn about the properties of the various metals used in this type of fabrication.

MANUFACTURING PROGRAMS



OSHA 10

Fees: \$199

Modality: Hybrid

Contact Hours: 20

Introduces OSHA (Occupational Safety and Health Administration) and its regulations that apply to the manufacturing industry. Introduces safety rules and issues using overhead cranes, hoists, rigging equipment, attachment components, calculating sling angle stresses, and safe lifting and turning loads.

OSHA 30, CONSTRUCTION

Fees: \$250

Modality: Online

Contact Hours: 10

Prerequisite: OSHA 10, Construction

This course introduces OSHA and the OSHA regulations that apply to the construction industry. Introduces safety rules and issues in the use of electrical safety, fire safety, personal protective equipment, permit-required spaces, concrete and masonry, steel friction, welding and cutting, and heavy equipment. Provides the knowledge and skills necessary to help sustain life and minimize the consequences of injury or sudden illness to meet the various training needs of those in the workplace, school, or community settings.

PROGRAMMABLE LOGIC CONTROLLERS (PLCS)

Fees: \$575

Modality: Hybrid

Program Length: 8 Weeks

Introduces Programmable Logic Controllers (PLCs) and elements needed for an automated industrial control system. Introduces memory and project organization within a PLC (Programmable Logic Controllers) and provides instruction in basic numbering systems, computer, and PLC terminology. Introduces PLC control functions, program structures, language standards, wiring and troubleshooting methods, and real-world communications. Requires the student to program a PL, which may include a combination of ladder logic, structured text, sequential function chart, and/or function block languages. Includes various industrial communications protocols between PLC-controlled machines, PLC to PLC, PLC to computer, and computer to computer.

PROGRAMMABLE LOGIC CONTROLLERS II (ADVANCED PLCS)

Fees: \$575

Modality: Face-to-Face

Program Length: 8 Weeks

Prerequisites: PLC I and/or advanced electronics knowledge (OJT)

In this course, the student will recognize programmable logic controllers (PLCs) and their industrial applications. They will operate PLCs for industrial systems. The course will teach and demonstrate the operation of automated systems using a human-machine interface (HMI) and others. Further, the course will teach the student how to demonstrate effective troubleshooting skills by performing computer-based and/or machine-based troubleshooting; applying root cause analysis techniques to identify problem causes, and evaluating & documenting corrective action options.

MANUFACTURING PROGRAMS



SOLAR ENERGY TRAINING (PV ASSOCIATE CERTIFICATION)

Fees: \$1,495

Modality: Hybrid/Virtual

Contact Hours: 60 Hours

Prerequisite: Background/experiences in electrical and construction

This 60-hour course covers the knowledge and provides students with the skills to sell, design, install, and maintain solar photovoltaic systems. Career opportunities include solar photovoltaic salesperson, designer, installer, and maintenance technician. Certifications: NABCEP, Photovoltaic Installer (PVI) - Level 1, and OSHA 10).

Course topics will include applications of solar photovoltaic systems, including types of plans, their benefits, and components; the information and tools needed to adequately explain the advantages and economics of a solar PV system to a prospective customer; the design requirements for choosing equipment, configuring, and sizing of solar PV systems; the installation requirements and procedures for solar PV systems; and the testing, operation, maintenance, and troubleshooting of completed solar PV installations.

SOLDERING: IPC-A-610 CIS CERTIFICATION

Fees: \$1,432

Modality: Face-to-Face

Contact Hours: 24

The IPC-A-610 Training Program provides individuals with a valuable, portable credential that recognizes their understanding of the Acceptability of Electronic Assemblies. Certification is required throughout the medical, aerospace, and military manufacturing industries as a condition of employment. Students will learn the following: Policy and procedure, soldering and high voltage, component damage and PCBAs, Terminals, through-hole technology and jumper wires, surface mount and jumper wires, and hardware.

SOLDERING: IPC-J-STD-001 CIS CERTIFICATION

Fees: \$2,240

Modality: Face-to-Face

Contact Hours: 40 Hours

Prerequisite: IPC-A-610 CIS Certification

The J-STD-001 CIS Training Program (Operator) provides individuals with a valuable, portable credential that recognizes their advanced knowledge and understanding of the Acceptability of Electronic Assemblies. This certification is the gold standard, required throughout the medical, aerospace, and military manufacturing industry as a condition of employment. In this modularized program, the student will learn advanced lessons in the following areas: Requirements of the J-STD-001, wires and terminals, PCB, coating, encapsulation, and staking, through-hole technology, surface mount, and inspection.

TECHNOLOGY & DRONES



AMAZON AWS CERTIFIED CLOUD PRACTITIONER CERTIFICATION

Fees: \$1,295

Modality: Hybrid/Virtual or Online

Program Length: 8 Weeks

The AWS Certified Cloud Practitioner Certification class is an ENTRY-LEVEL AWS certification for anyone who wants an introduction to Cloud Computing and AWS. This class is a perfect foundational class to lead into our “AWS Certified Solutions Architect-Associate” course.

AMAZON AWS CERTIFIED SOLUTIONS ARCHITECT ASSOCIATE CERTIFICATION

Fees: \$1,995

Modality: Hybrid/Virtual or Online

Program Length: 8 Weeks

Prerequisite: Experience in AWS/Cloud Computing and/or CompTIA Network+/Cloud+

The Amazon AWS Certified Solutions Architect Associate Certification Course aims to equip students with every skill required to successfully handle cloud applications on AWS and to become an expert in using the various AWS services. This course prepares students to take the AWS Certified Solutions Architect - Associate (SAA-C02) certification exam.

AMAZON AWS CERTIFIED DEVELOPER - ASSOCIATE CERTIFICATION

Fees: \$1,995

Modality: Hybrid/Virtual or Online

Program Length: 8 Weeks

Prerequisite: Experience in AWS/Cloud Computing and/or CompTIA Network+/Cloud+

This credential helps organizations identify and develop talent with critical skills for implementing cloud initiatives. Earning AWS Certified Developer – Associate validates the ability to write and deploy cloud-based applications. AWS Certified Developer – Associate is intended for anyone with one or more years of hands-on experience developing and maintaining an AWS-based application.

AMAZON AWS CERTIFIED SYSOPS ADMINISTRATOR- ASSOCIATE CERTIFICATION

Fees: \$1,995

Modality: Hybrid/Virtual or Online

Program Length: 8 Weeks

Prerequisite: Experience in AWS/Cloud Computing and/or CompTIA Network+/Cloud+

This credential helps organizations identify and develop talent with critical skills for implementing cloud initiatives. Earning AWS Certified SysOps Administrator - Associate demonstrates experience deploying, managing, and operating workloads on AWS. The AWS Certified SysOps Administrator- Associate exam validates that a candidate has the experience and skills to contribute and “hit the ground running” within a team supporting an AWS Cloud environment.

TECHNOLOGY & DRONES

AMAZON AWS CERTIFIED SOLUTIONS ARCHITECT- PROFESSIONAL CERTIFICATION

Fees: \$1,995

Modality: Hybrid/Virtual or Online

Program Length: 8 Weeks

Prerequisite: Experience in AWS/Cloud Computing and/or CompTIA Network+/Cloud+

The AWS Certified Cloud Practitioner Certification class is an ENTRY-LEVEL AWS certification for anyone who wants an introduction to Cloud Computing and AWS. This class is a perfect foundational class to lead into our “AWS Certified Solutions Architect-Associate” course.

AMAZON AWS CERTIFIED SOLUTIONS ARCHITECT ASSOCIATE CERTIFICATION

Fees: \$1,995

Modality: Hybrid/Virtual or Online

Program Length: 8 Weeks

Prerequisite: Experience in AWS/Cloud Computing and/or CompTIA Network+/Cloud+

This credential helps organizations identify and develop talent with critical skills for implementing cloud initiatives. Earning AWS Certified Solutions Architect - Professional validates the ability to design, deploy, and evaluate applications on AWS within diverse, complex requirements.

CompTIA Cybersecurity (and other CompTIA) Courses

To pursue a career in Cybersecurity, it is recommended that you take CompTIA A+, CompTIA Network+, and CompTIA Security+ and earn the industry certifications for each. After those core certifications, you can supplement them with CompTIA Cloud+, CompTIA Server+, CompTIA CASP, and CompTIA CySA+ certifications.

COMPTIA A+ COMBINED CERTIFICATION

Fees: \$1,695

Modality: Hybrid/Virtual or Online

Program Length: 8 Weeks

Prerequisite: CompTIA A+ Certification

Learn the fundamentals you need to prepare for the CompTIA Network+ certification exam (N10-007) and start a career as a network technician. With our comprehensive curriculum and an expert course facilitator, master basic networking concepts and learn about network design, security, routing and switching, cloud computing, IPv6 forensics, and common security practices.

COMPTIA SECURITY+ CERTIFICATION

Fees: \$1,695

Modality: Hybrid/Virtual or Online

Program Length: 8 Weeks

Prerequisite: CompTIA Network+ Certification

Gain the skills you need to be a security professional and prepare to take the CompTIA™ Security+ certification SY0-501 exam, as you master the basics of system security, network infrastructure, access control, and organizational security. Once you complete this course, be proficient in installing and configuring systems to secure applications, networks, and devices; performing threat analysis and responding with appropriate mitigation techniques; participating in risk mitigation activities; and operating with an awareness of applicable policies, laws, and regulations.

TECHNOLOGY & DRONES



COMPTIA DATA+ DATA ANALYTICS CERTIFICATION

Fees: \$1,995

Modality: Hybrid/Virtual or Online

Program Length: 8 Weeks

Prerequisite: Google Data Analytics Professional Online recommended (but not required)

CompTIA Data+ is an early-career data analytics certification for professionals tasked with developing and promoting data-driven business decision-making.

COMPTIA CLOUD+ CERTIFICATION ONLINE

Fees: \$1,295

Modality: Online

Contact Hours: 24 Hours

Prerequisite: CompTIA Network+ Certification

Cloud+ covers the increased diversity of knowledge, skills, and abilities required of system administrators to validate what is necessary to perform effectively in data center jobs. CompTIA Cloud+ views cloud-based infrastructure services as an increasingly important part of an organization's IT systems. It is the only vendor-neutral, performance-based certification covering more than a specific vendor or a single function like security or networking to help you better realize the return on investment of cloud infrastructure services.

UAS/DRONES REMOTE PILOT CERTIFICATION PREP

Fees: \$399

Modality: Hybrid

Program Length: 6 Weeks

This 15-hour certification prep course is designed to prepare students for the FAA Remote Pilot Certificate exam. Knowledge areas will include UAS regulations, flight operations, restrictions, loading and performance, emergency procedures, crew resource management, radio communication procedures, determining UAS performance, psychological effects of drugs and alcohol, aeronautical decision-making and judgment, airport operations, maintenance, and preflight inspection procedures. The class is offered through Zoom for 6 weeks, with 2.5 hours each meeting.

UAS/DRONES FLIGHT TRAINING

Fees: \$299

Modality: Face-to-Face, Seminole Campus

Program Length: 10 Hours (2 Saturdays)

Prerequisite: Active UAS/Drone Certification Part 107

This 10-hour hands-on course is a follow-up to the UAS/Drones Certification class. This course provides hands-on/interactive flight time training for certified Drone pilots.

TECHNOLOGY & DRONES



UAS/DRONES SAFETY LEVELS 1 AND 2

Fees: \$399

Modality: Online with Face-to-Face Option

Program Length: 6 Weeks

Prerequisite: Active UAS/Drone Certification Part 107

The Small UAS Safety Certification is designed to set a safety-inspired foundation for any UAS operation. The course provides remote pilots with a sound foundation in the theoretical, covering a wide survey of UAS technologies and concepts.

BASIC COMPUTER SKILLS & DIGITAL LITERACY ONLINE

Fees: \$199

Modality: Online

Contact Hours: 16 Hours

This course is designed for students who need a fundamental course in Basic Computing and Digital Literacy. Are your general computer skills/knowledge lacking or not where you want them to be? Do you need to brush up on the basics of computing and Microsoft applications? This course is perfect for you and will prepare you for more intermediate and advanced-level coursework.

ESSENTIAL IT SKILLS FOR CONDUCTING BUSINESS IN A VIRTUAL WORLD ONLINE

Fees: \$399

Modality: Online

Contact Hours: 24 Hours

Spring 2024, Summer 2024

It is vital in today's world to have the technical ability and knowledge to work remotely. Whether in a global pandemic, or a business that is shifting its focus to remote work, individuals need the knowledge of specific tools that organizations use to conduct business remotely.

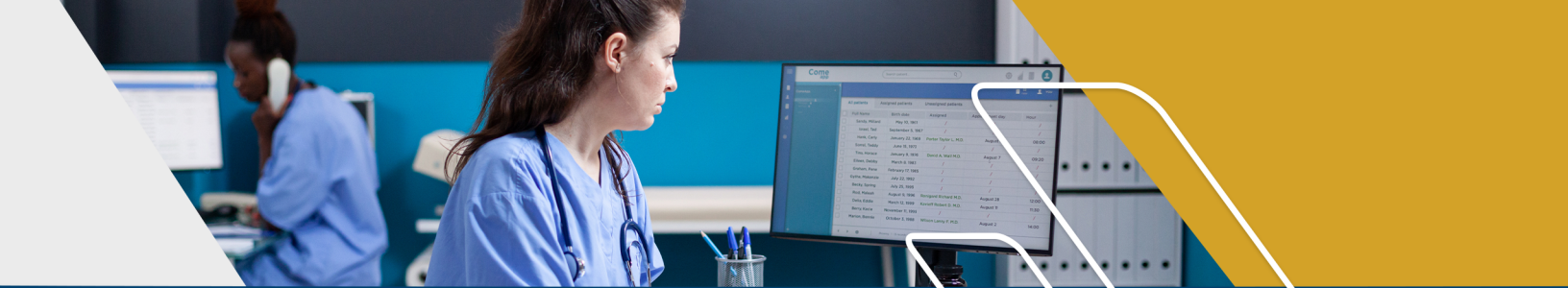
MICROSOFT CORE PRODUCTIVITY FULL SUITE ONLINE

Fees: \$599

Contact Hours: 120 Hours

Program Length: 6 Weeks

Our Microsoft Office Core Productivity online classes teach users the skills to be more productive when using these applications in their daily personal and business lives.



Contact Us

-  **Website:** spcollege.augusoft.net
-  **Phone:** 727-341-4445
-  **E-mail:** workforce@spcollege.edu

Equal Opportunity Statement

The Board of Trustees of St. Petersburg College affirms its equal opportunity policy in accordance with the provisions of the Florida Educational Equity Act and all other relevant state and federal laws, rules and regulations. The college will not discriminate on the basis of race, color, ethnicity, religion, sex, age, national origin, marital status, pregnancy, sexual orientation, gender identity, genetic information, or against any qualified individual with disabilities in its employment practices or in the admission and treatment of students. Recognizing that sexual harassment constitutes discrimination on the basis of sex and violates this Rule, the college will not tolerate such conduct.

Special Needs and Accommodations

St. Petersburg College conducts its programs in barrier-free facilities. Prior arrangements to provide special assistance or accommodations must be requested directly through the site at least (5) business days in advance of the accommodation need.

